

## MUSICAL FIDELITY



\*M6xTT is sold without cartridge

## M6xTT

High-End turntable with the same design principles as the M8xTT at a more affordable price point.

### M6xTT In Brief

- Mass loaded belt drive design with electronic speed change 33/45 RPM
  - Heavyweight 6.6kg aluminium platter
  - Record puck included
  - Leather mat included
  - Height adjustable magnetic feet
  - 9" Musical Fidelity tonearm
  - Azimuth and VTA fully adjustable
  - Non-resonant acrylic plinths with effective decoupling
  - 5P DIN tonearm output
  - Handmade in Europe
- Speed:** 33, 45 (electronic speed change)  
**Drive principle:** belt drive with electronic speed control  
**Platter:** 39mm thick, 6.6kg aluminium platter  
**Platter bearing:** Inverted bearing with ceramic ball tip  
**Tonearm:** 9" Musical Fidelity tonearm  
**Effective tonearm mass/length:** 13g/230mm  
**Overhang:** 18mm  
**Wow & flutter:** 33rpm:  $\pm 0.08\%$ , 45rpm  $\pm 0.07\%$   
**Speed drift:**  $\pm 0.11\%$ , 45rpm:  $\pm 0.11\%$   
**Signal to noise:** -75dB  
**Dimensions (WxHxD):** 480x210x370mm  
**Weight:** 19,1kg

# MUSICAL FIDELITY

## HISTORY

The M6xTT establishes the design philosophies of the legendary M1 turntable in our M6 line. The M1 design was created by Musical Fidelity founder Antony Michaelson and Heinz Lichtenegger - back then Musical Fidelity distributor and now brand owner. The design was very important and should match the mechanically stunning amplifiers. The base idea was to combine the inert mass of metal alloys with zero resonating acrylic. The motor was effectively decoupled from the tonearm and platter with the dual chassis construction.

It was a great success and after the M8xTT, now the M6xTT is second in line to bring a more affordable version of this design philosophy to the market.

## THE TONEARM

The 9-inch tonearm is the same design as in the M8xTT, but with a shorter tonearm tube, a streamlined headshell design and a direct 5P DIN output.

It incorporates our ultra low resonance design with transparent acrylic bearing ring and conical aluminium tonearm tube.

The tonearm is fully VTA and azimuth adjustable and comes with two counterweights, which are TPE damped to prevent resonances.



## MUSICAL FIDELITY



### THE MOTOR & PLATTER

The motor is sitting in on a special foam in the lower level acrylic plinth to decouple it from the platter and the tonearm. The electronic speed control allows you to switch between 33 & 45 RPM.

Like the M8xTT, the M6xTT is equipped with the same sophisticated speed control technology. The motor is powered by a precision DC-driven AC generator for the utmost in precision of speed and stability. This means the frequency and voltage for the motor are completely generated from scratch by our control electronics and you are not handicapped by the quality of your mains power when it comes to achieving perfect playback speeds.

A one-piece belt manufactured without any gluing con connects the motor and the TPE damped platter, which is made of aluminium and weighs a hefty 6.6kg.



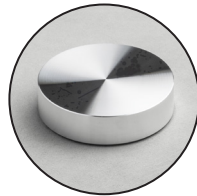
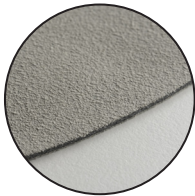
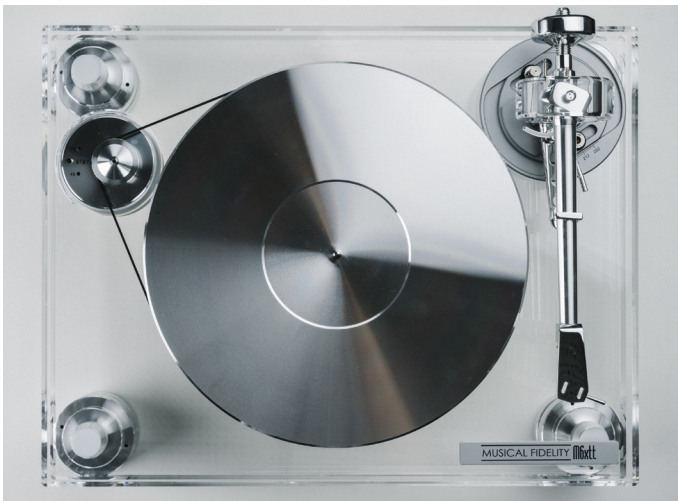
### THE FEET

Four heavyweight TPE damped aluminium feet with magnetic support connect the two acrylic plinths with teflon spacers in between.

You can adjust them in height by turning the rifled middle part of the feet to level the turntable.



## MUSICAL FIDELITY



### IN THE BOX

You will find a heavyweight full aluminium puck in the box to stabilize your records while playing to achieve the best possible tracking.

A leather turntable mat is also included, which is a superior base for your vinyl records. You will benefit from less noise and a special sound characteristic.

To connect your M6xTT to your pre-amplifier, a semi-balanced phono interconnect cable with gold-plated connectors is included as well.

A clear acrylic dustcover is available separately.

